

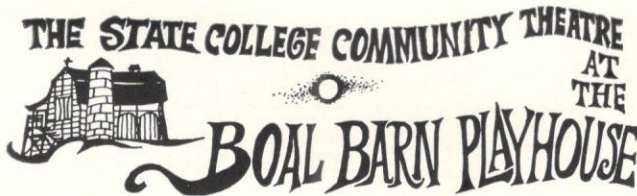
# Cheaper By The Dozen

By Christopher Sergel

Directed by Warren E. Beckman

presented

by



July 12-15 and 19-22, 1967

*we salute the boal barn playhouse*



## NUCLIDE CORPORATION

642 EAST COLLEGE AVE., STATE COLLEGE, PA.

MASS SPECTROMETERS • RESEARCH & DEVELOPMENT • ANALYTICAL SERVICES



We haven't got a quote this year—  
to keep you on your toes.  
But, we have lots of books and things,  
at the store that grows and grows.

### THE PENNSYLVANIA BOOK SHOP

(UPSTAIRS and DOWNSTAIRS)

East College Ave. at Hiester St.  
(Campus Shopping Center)

Daily 9 - 9

237 - 2927

### IMAGINATION, COLOR,

plus a

deft hand

transforms just another

office into

a wonderful way

to spend a day. Call . . . . .



P.S.: In State College, the touch  
of Jack Wilkinson grows  
at the TREASURE HOUSE.

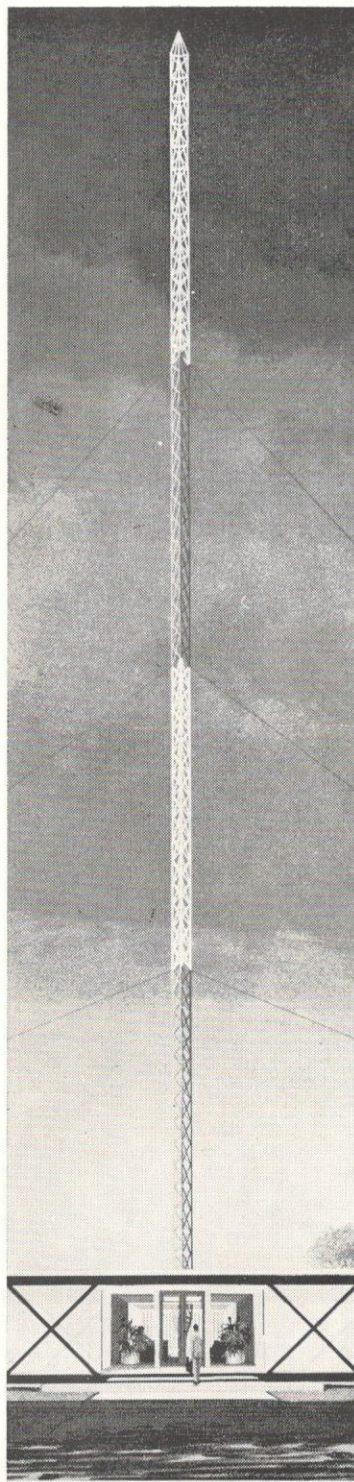
355 - 2622  
BELLEFONTE



THERE'S A WORLD OF SERVICE  
AT EVERY OFFICE . . .



Bellefonte, Pleasant Gap, State College



Best Wishes For A  
Successful Season

to

Community Theatre

from

Community Conscious Radio

**WRSC** AM 1390  
FM 96.7

**CBS FOR CENTRE COUNTY**

**YOU ARE CORDIALLY INVITED  
TO LISTEN**

- CBS WORLD NEWS and DIMENSION FEATURES
- UNITED PRESS INTERNATIONAL NEWS
- COMPLETE LOCAL NEWS from WRSC News Central
- LOCAL, STATE, and NATIONAL WEATHER REPORTS
- PARTY LINE — WRSC's Look at Community Events
- TRADING POST — A Service to those buying,  
Selling or Trading
- LIGHT AND LIVELY — Listenable Music All Day
- SPONSOR MESSAGES — Where the Best Buys  
Are Found

*Programmed for an Informed and  
Entertained Centre County*

**1390 AM  
96.7 FM**

**WRSC**

**TUNE TO WRSC-FM (96.7) OPENING NIGHT  
OF ALL BOAL BARN PRODUCTIONS FOR  
SPECIAL GREEN ROOM BROADCASTS.**

Live and Direct from the Playhouse Stage,  
following final curtain — Presented by the  
Metropolitan Life Insurance Company.

**P. O. Box 242**

**Clearview Avenue, State College**



## *A Message from the SCCJ President .*

The State College Community Theatre has for the past several years carried through a tradition of presenting the young talent in at least one show each season, and you will see them tonight. I guess most of us have heard the expression "stage struck" at one time or another, and this is when it happens. For some of our cast it will be their first time on stage. The first opportunity to bring to life a character created by the playwright's mind. Perhaps this is the way some of the adults in the cast got started, playing a role as a child member of a cast. I'm certain you will enjoy the family you will meet tonight, and maybe some of the action will take you back a few years, and recall some moments from real life as they happened to a family you knew. The problems of raising a family are a lot more fun when they belong to someone else, and we hope you'll enjoy a chuckle, a smile, and a tug at your heart-strings before tonight's final curtain.

Next at Boal Barn, "THE DESPERATE HOURS," a drama you'll remember for a long time, as something that just might have happened to you.

*Nick Carter*

### **HRB-SINGER, INC.**

SCIENCE PARK • STATE COLLEGE, PENNSYLVANIA



TIME TO GO  
ALL OUT  
WITH . . . . .

## **NEW IDEAS**

. . . to make all of your printed material actually **SELL** your product or service, produce **PROFIT** through efficiency, and put your "best foot forward" as it arrives in other offices and homes.

Call us at 238 - 3025 or stop in at our office in the Campus Shopping Center. We'll welcome the opportunity to share with you our ideas for making your printed material get **RESULTS**.

**COMMERCIAL PRINTING, INC.**

FURNITURE SHOPPING  
IS FUN AND FASCINATING

at

**ISHLER'S**

- on Benner Pike
- Open 9 til 9

Westinghouse and  
Kelvinator Appliances

**CENTRE HARDWARE, INC.**

- HOUSE WARES
- GARDEN SUPPLIES
- HARDWARE
- RENTALS

221 South Allen Street  
State College, Pa.

*The  
Nittany Lion Inn*

ENJOY YOUR  
PRE-THEATRE DINNER

and

SUNDAY BUFFET

in our

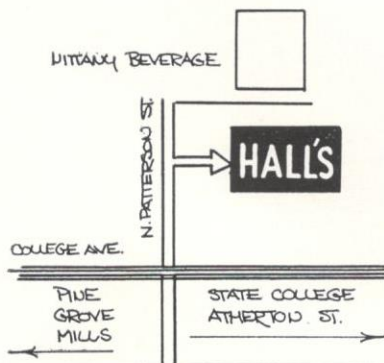
AIR-CONDITIONED

DINING ROOM

open

5:30 to 8:00 P.M.

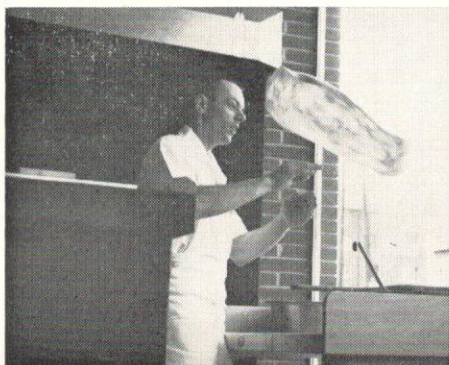
For Reservations, phone 237-7671



**HALL'S SALVAGE  
OUTLET**

Rear 121 N. Patterson, State College

***Bargains on All Your Needs!***



a warm,  
comfortable  
rustic  
atmosphere

*With the same great  
Pizza and Service*

The New **Hi-Way Pizza** 112 S. Garner St.



Let

# A & P

SHOW YOU THE WAY TO

DRAMATIC SAVINGS

(Plaid Stamps, too!)

IN STATE COLLEGE

Two Convenient Locations:

- WESTERLY PARKWAY
- NORTH ATHERTON ST.

---

## CULLIGAN WATER CONDITIONING SERVICE

Elimination of Taste, Color, Hardness, Turbidity  
FAY HILEMAN, Owner

### FREE MINERAL ANALYSIS

Water Conditioning Experts  
at Your Service

1478 Curtin St., State College  
238 - 8331

---

## MY - O - MY BAR AND RESTAURANT

— Upstairs and Downstairs —  
— Across from Old Main —

"WHERE CELEBRITIES COME  
TO MEET PEOPLE"

GO - GO GIRLS NIGHTLY

## 1967 Summer Staff



**WARREN E.  
BECKMAN**  
Director

A newcomer to both the SCCT and the State College area, director-actor Warren Beckman comes to SCCT with considerable credits and wide experience. In announcing his selection for the 1967 summer season, President Nick Carter said "We feel most fortunate to have a man of such talent and experience interested in directing our group." Warren, who teaches speech and theatre arts at the Carlisle Senior High School in Carlisle, Pa., has spent three seasons with the Barter Theatre, at Abingdon, Va. He was associated with the Rockland County Playhouse, in Blauvelt, N.Y., the Tufts University Theatre, at Medford, Mass., and Allenberry Playhouse, in Boiling Springs. He has also worked with the Harrisburg Community Theatre.



**MARTIE SCHLOW**  
Business Manager

Returning to SCCT after a two-year absence, this season should be a sincere "Welcome back" to Martie, who, with her family, has been a long-time mainstay of SCCT. Martie has served in both acting and directing capacities, before accepting the Business Managership this season, directing *House on a Cliff*, and *Hay Fever*, and acting in *Present Laughter*, *Love Rides the Rails*, *Silver Chord*, and most recently in *Separate Tables*. In addition to being active in numerous community organizations, Martie, who returned to State College from San Francisco in 1939, is a Graduate Student in Speech, and is probably the most recent graduate in this summer's staff. After a 30-year delay, Martie received her bachelor's degree from Penn State in March.

## 1967 Summer Staff



**ROBERT SAMs**  
Technical Director

"Bob" Sams started in his job in the middle of the season, and although it was more difficult, he admits "I usually do things this way." Bob is not unacquainted with Boal Barn, having worked as an apprentice in 1965, and winning the "Best Apprentice Award" that season. A '67 graduate of State College High School, Bob played several roles in high school productions, in *Sunrise at Campobello*, and *The Importance of Being Earnest*. Bob also appeared in *The Lady's Not for Burning* at the Boal Barn. As Tech Director, Bob feels his major challenge to be building sets. Bob plans to attend the University of Chicago beginning in the fall.



**CAROLE MERRYMAN**  
Publicity Director

Carole may be more familiar to SCCT-goers for her on-stage appearances than off. Starting from the chorus of *The Sound of Music*, the 1965 Spring musical, Carole has appeared as Agnes in *Time Out for Ginger*, and last season, as Mrs. Kirby in *You Can't Take It with you*, and Mrs. Bedwin in *Oliver!* However, Carole's qualifications for the post of Publicity Director this season are obvious. For six years, she was employed as a news reporter, daily by-lined columnist and on occasion, photographer, for the Clearfield Progress, before coming to State College. She also worked as the Assistant to the County Editor of the Centre Daily Times in State College for two and one-half years, before becoming executive secretary in a local insurance and property management business.



113 Hiester St., State College

- ★ Great Food . . . he-man sandwiches . . . Succulent Dinners!
- ★ Jewish Style      ★ We Cater, too

**Mr.**

**lan**

**Hairstylist**

- where women enter a new world of creativity
- Visit our new Wig Salon

114 Hiester Street

State College

### **KEELER'S** THE UNIVERSITY BOOK STORE

- Souvenirs and Gifts
- Fine Books
- Artists' Materials
- Social Stationery

206 E. College Ave.  
State College, Pa.

### **BOALSBURG** STEAK HOUSE

- Full Cocktail Service

★ SPAGHETTI

★ U.S. PRIME STEAKS



## *Message from the Director . . .*

In case you hadn't made the association between the authors of the book **CHEAPER BY THE DOZEN**, and Ernestine and Frank Gilbreth, two of the children on stage tonight . . . this fresh, family-style comedy is founded on fact. The humor is genuine, and delightful . . . and because the situation is a real one, it has meaning and importance.

With the proven reputation of **CHEAPER BY THE DOZEN** for pleasing audiences both young and old, my job becomes exceptionally simple here, once the casting is completed. As I mentioned once before, during casting, it was certainly difficult to choose just nine young people for the roles of the Gilbreth children, but once that job was done, the rest was a "natural."

The history of **CHEAPER BY THE DOZEN** suggests its immense popularity in many forms. As a novel it was a best seller, was condensed, serialized, and chosen by well-known book clubs. Later it became an outstanding motion picture, and has been called "the perfect play for amateurs."

With the lively antics of the children, and the hilarious situations that evolve, we are hopeful that this evening of theatre will prove to be a delightful one for you and your family.

*Warren E. Beckman*

## NEED SOMETHING?

## WHY NOT RENT IT?

Invalid Needs — Bicycles — Automatic Tools  
Exercising Equipment — Plumbing Tools — Painting & Papering Tools  
Household Equipment — Camping Trailers — Garden & Yard Tools  
Contractors' Tools — Power Tools — Camping & Picnicking Needs  
Office Equipment — Party Needs — Audio-Visual Equipment  
Concrete Tools — Banquet Needs — Beds & Baby Needs  
Moving & Loading Equipment — Cleaning & Washing Equipment

**Renting**

**Doesn't**

**Cost . . . It Pays!!**

 **Unlimited**  
**RENT-ALLS**

**140 N. ATHERTON STREET**

**(Next to the bus station)**





## *whitehall plaza*

424 Waupelani Drive,  
State College

**428 WAUPELANI DRIVE**

**STATE COLLEGE, PA.**

**814 - 238 - 2600**

***"State College's Address of Distinction"***

**Choose a Whitehall Plaza Apartment**

**Look at the reasons why . . .**

**WHITEHALL PLAZA APARTMENTS OFFER YOU:**

- Spacious Rooms
- Walk-in Closets
- Air-conditioning
- 12 cu. ft. Refrigerators
- Built-in Gas Ranges
- Ample Parking
- Gas for Heat, Hot Water and Cooking is included in the rent!
- Luxury Kitchens
- Ceramic Tile Baths
- Individual Heat Controls
- Hardwood Floors
- Garbage Disposals
- Convenient Location

**Phone now . . . 238 - 2600 for your Whitehall Plaza Apartment information . . . even if you can't move until Fall.**

# CHAR-PIT

TAKE HOME SERVICE

WE'VE GOT THE BEST

## Kentucky Fried Chicken

North America's Hospitality Dish...

### DINNER — Boxed to Go

3 generous pieces of Kentucky Fried Chicken served with your choice of 2 of the following: french fries, apple sauce, baked beans, cole slaw, potato salad, plus hot rolls. **\$1.25**

### THE BUCKET

Serves 5 to 7 — 15 pieces of Kentucky Fried Chicken, hot rolls, and a pint of one of the following: apple sauce, baked beans, potato salad, cole slaw or french fries.



**\$3.95**

### THE BARREL

Serves 7 to 9.  
21 pieces of  
Kentucky  
Fried Chicken

**\$4.95**

### "Char-Broiled"

- HAMBURGERS
- FRENCH FRIES
- MILK SHAKES

**19c**

### WE ALSO SERVE

Char-Broiled 12" Hot Dogs ..... 39c  
 1-lb. Rib Eye Steak Sandwich ..... 69c  
 Our Own (sweet!) Onion Rings .... 25c

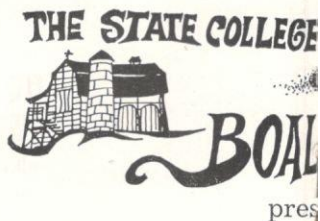
# CHAR-PIT

TAKE HOME SERVICE

N. ATHERTON ST. • STATE COLLEGE

Phone 237 - 3912

for Immediate Pick-up



## CHEAPER BY

by Christo

from the book by Frank B. Gilbreth

The

MR. GILBRETH — Dad .....  
 MRS. GILBRETH — Mother .....  
 ANNE .....  
 ERNESTINE .....  
 MARTHA .....  
 FRANK .....  
 BILL .....  
 FRED .....  
 DAN .....  
 JACKIE .....  
 LILLIAN .....  
 MRS. FITZGERALD — housekeeper .....  
 DR. BURTON — family doctor .....  
 JOE SCALES — a cheerleader .....  
 MISS BRILL — a teacher .....  
 LARRY — someone "special" .....  
 THE DOG .....

Place: The living room of the Gilbreth

Time: The

ACT I

SCENE ONE — The Gilbreth

SCENE TWO — The same.

ACT II

The same. A few

ACT III

The same. A few

Produced by special arrangement with

FIFTEEN MINUTE INTERMISSION



# COMMUNITY THEATRE AT THE BARN PLAYHOUSE

sents

## THE DOZEN

phper Sergel

h, Jr. and Ernestine Gilbreth Carey

Cast

..... Gil Aberg  
 ..... Virginia Allison  
 ..... Julie Smith  
 ..... Carly Searles  
 ..... Barbara Breon  
 ..... Charles Boyd  
 ..... Pat Morse  
 ..... Scott Gilbert  
 ..... Brian Tobin  
 ..... Jackie Menoher  
 ..... Ellen Kresen  
 ..... Barbara Albinski  
 ..... Ken Pahel  
 ..... Rod Wheeland  
 ..... Mary Lou Garber  
 ..... Dick Kozak  
 ..... Friskie

breth Home, Montclair, New Jersey

e twenties

ONE

h living room. A day in autumn.

Two weeks later.

TWO

ew weeks later.

THREE

day in spring.

The Dramatic Publishing Co. of Chicago

MISSION BETWEEN ACTS

You're Always Pretty  
as a Picture When  
you Shop . . .



The Carriage House

Women's  
Fashions

109 South Pugh Street  
State College

*"The fashionable place to shop"*

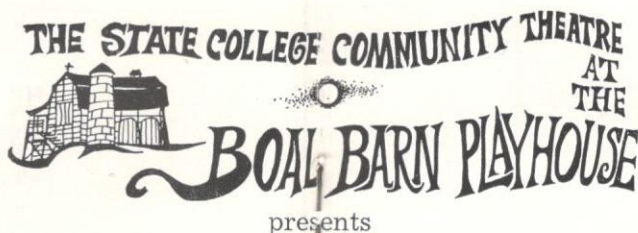


Sword & Shield

Beef and Beer  
before the  
Theatre

(Dinner 6:00 - 9:00 p.m.)  
OR A LATE SNACK!

108 SOWERS STREET



# CHEAPER BY THE DOZEN

by Christopher Sergel

from the book by Frank B. Gilbreth, Jr. and Ernestine Gilbreth Carey

## The Cast

MR. GILBRETH — Dad .....	Gil Aberg
MRS. GILBRETH — Mother .....	Virginia Allison
ANNE .....	Julie Smith
ERNESTINE .....	Carly Searles
MARTHA .....	Barbara Breon
FRANK .....	Charles Boyd
BILL .....	Pat Morse
FRED .....	Scott Gilbert
DAN .....	Brian Tobin
JACKIE .....	Jackie Menoher
LILLIAN .....	Ellen Kresen
MRS. FITZGERALD — housekeeper .....	Barbara Albinski
DR. BURTON — family doctor .....	Ken Pahel
JOE SCALES — a cheerleader .....	Rod Wheeland
MISS BRILL — a teacher .....	Mary Lou Garber
LARRY — someone "special" .....	Dick Kozak
THE DOG .....	Friskie

*Place: The living room of the Gilbreth Home, Montclair, New Jersey*

*Time: The twenties*

## ACT ONE

SCENE ONE — The Gilbreth living room. A day in autumn.

SCENE TWO — The same. Two weeks later.

## ACT TWO

The same. A few weeks later.

## ACT THREE

The same. A day in spring.

Produced by special arrangement with *The Dramatic Publishing Co.* of Chicago

**FIFTEEN MINUTE INTERMISSION BETWEEN ACTS**



## Meyers'

### BaRestaurant

210-214 W. COLLEGE AVE.

LUNCHEONS

DINNERS

PIZZAS

SNACKS

11:30 a.m. to 1 a.m.

Monday — Saturday

## TOM HORNER FURNITURE

- CUSTOM DRAPERIES
- SLIPCOVERS

*"Furniture and Gifts with Character"*

1356 E. COLLEGE AVE.

238 - 9681

## La Piuma

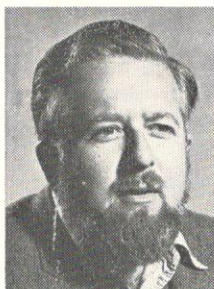
is the place to find  
shoes and other  
fashionery things  
that are really  
fashioney.

218 E. College Avenue  
(next to the Tavern)

**THE STATE COLLEGE AREA  
CHAMBER OF COMMERCE**  
*welcomes*

**Boal Barn  
Theatre-goers**

## On Stage Tonight



Gil Aberg  
Mr. Gilbreth —  
Dad

Gil Aberg feels almost type cast in the role of Mr. Gilbreth, since he figures he has as many "children" in reality as he has on stage tonight. Five in the flesh, and four on paper, including three plays and a Thespian musical he has written. Gil, who is currently serving on the Community Theatre Board as Vice President, traces his Boal Barn association back to the first show played on the Boal Barn stage, *Tovarich*, in which he performed. He also has the distinction of having appeared in almost every season since that first performance. He is on the staff of the University's Department of Public Information.



Virginia Allison  
Mrs. Gilbreth —  
Mother

Although Virginia Allison has been active in Community Theatre in other locales for some time, this is her first appearance on the Boal Barn stage. She has been with the Regent Theatre in Beaver Falls, Pa., the Ambridge Community Theatre, and the Beaver Valley Thespian Club, particularly working on such aspects of theatre as costumes, make-up and publicity. When she isn't taking care of her husband and three children, and their Boalsburg home, Virginia enjoys sewing and designing.



Julie Smith  
Anne

Julie Smith, who will be a Junior at the State College High School in the Fall, is making her debut on the Boal Barn stage in the role of Anne tonight. Her only other theatrical experience was doing make-up for the High School Thespians. Julie is otherwise very active in high school, where she will be a varsity Cheerleader, publicity assistant on the Little Lions Yearbook staff this coming year, and Secretary of the State High Student Council.



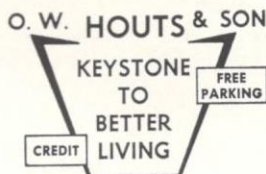
Carly Searles  
Ernestine

Boal Barn regulars may recognize Carly's name as one of the Boal Barn apprentices for both last year and the current season. She has been active in Community Theatre work backstage, working on props for *Kiss Me Kate*, and make-up for the children's production of *Hansel and Gretel*. At State College schools, Carly worked on the all-school play at Westerly Parkway Junior High School, and is a member of Thespians. Next year she will be a Sophomore at State College High School.

Barbara Breon  
Martha

Although Barbara will just be entering her Freshman year at State College High School in the fall, she has already amassed considerable credits on the Boal Barn stage, playing in *Oliver!*, and also in *Peter Pan* and *Winnie the Pooh*. She played the role of Brigetta in *The Sound of Music*, both in SCCT's production, and in Jennerstown, Pa. Community Theatre-goers may also remember Barbara in the production of *The King and I*.

**Quality Name Brand Merchandise**  
*Every day you get so much more  
for your money at*



EVERYTHING TO BUILD & FURNISH YOUR HOME

W. College Ave. & Buckhout St., State College

## CAMPUS CLEANERS

110 East Beaver Ave.

**1-HR. DRY CLEANING**

**3-HR. SHIRT LAUNDERING**

COMPLETE TAILORING

*Corillines Jewellers*



*... where diamonds are forever!*

• 132 S. Allen St.

china • sterling • jewelry • gifts • watches

## LES'S SUB AND PIZZA SHOP

Dining Area

**"FOR FAST OVEN-HOT DELIVERY"**

Corner of Beaver and Atherton

238 - 0596



**Historical**  
**Entaw House**

Built in 1823

**Potters Mills**

*Still making history  
with its High Quality Food*

**PRIME THICK STEAKS**

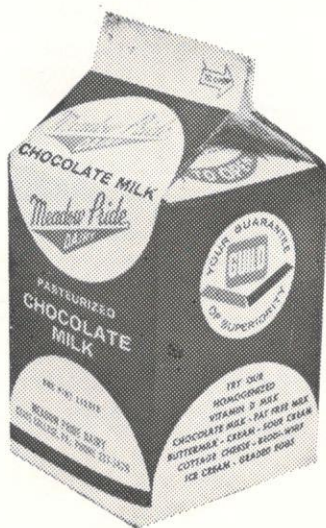
**SEAFOOD SHISHKABOBS**

**FULL COCKTAIL SERVICE**

**13 miles East of**

**State College**

Everyone enjoys a summer  
**MEADOW PRIDE MILK break . . .**



Try the "TASTE TEST"

- At your Favorite Store
  - Or delivered to your door
- Call 237 - 3426**

**Charles Boyd**

*Frank*

This is Chuck's second experience in *Cheaper by the Dozen*, since, in junior high school, he played the role of Dr. Burton. He's also serving this season as an apprentice. He has worked lighting both at the Boal Barn production of *Mary, Mary*, earlier this season, and in high school productions, where he also played several supporting roles. Chuck, who will be a junior in high school in the fall, is also very fond of music.

**Pat Morse**

*Bill*

Pat Morse has already made his debut on the Boal Barn stage, as a work-house boy, last season in *Oliver!* Other SCCT productions in which he has appeared are *The King and I*, and *Snow White*, and he has also worked on several plays at his school. Pat attends Westerly Parkway junior high school.

**Scott Gilbert**

*Fred*

Although Scott has only spent one year in State College, this is his second role for SCCT. He also appeared in *Hansel and Gretel*. In Scarsdale, he participated in the 50th anniversary celebration Finale, and various school plays. Scott has been studying piano for three years, and will be in the 8th grade at Scarsdale junior high school.

**Brian Tobin**

*Dan*

Brian, who came to State College from Carlisle with his family just this year, is making his first appearance on the Boal Barn stage. However, he has participated in school plays. Brian, who will enter the 7th grade at Westerly Parkway Junior High School in the fall, enjoys trumpet and piano.

**Jackie Menoher**

*Jackie*

One part of her role tonight was easy for Jackie . . . learning her stage name, which is Jackie too! Although she has no previous theatre experience, Jackie has participated in school shows and studies ballet and modern dance. She attends Easterly Parkway School.

**Ellen Kresen**

*Lillian*

Another new face is no surprise tonight, and Ellen Kresen, in the role of Lillian, is a new face to Boal Barn audiences. She has, however, participated in school plays at the Easterly Parkway School. Ellen also enjoys playing with dolls, and reading.

Barbara Albinski

Mrs. Fitzgerald

Tonight is Barbara Albinski's first appearance on this stage since her appearance in *Harvey*, in 1961. However, Barb has been close to SCCT in another role . . . that of Musical Director of *Kiss Me Kate*, *Hansel and Gretel*, the *Pied Piper*, and *Pinocchio and the Indians*. Barbara, who has a B.A. in Music from U.C.L.A., hopes to begin work on her Master's degree in the fall.

Ken Pahel

Dr. Burton

Ken's celebration after the close of this show will have double meaning, since he plans to marry on July 23. Although he says he has very little previous experience, Ken has worked on church and local plays and shows, especially comedy and musical shows, where he plays the banjo, piano or organ. Outside the theatre, Ken owns and operates Graphic Arts Center.

Rod Wheeland

Joe Scales

Rod's most recent work for SCCT was in the chorus for *Kiss Me Kate*, for which he also showed great talent in costumes. He has also participated in drama at Tyrone High School, where he was in the chorus for *Carousel* and *South Pacific*, and played in *Monkey's Paw* and *Charley's Aunt*. Rod's talent in costume accounts for his success in his tailoring work.

Mary Lou Garber

Miss Brill

Mary Lou comes honestly by her role as the teacher tonight, since she has taught in schools herself. Unlike Miss Brill, however, she likes students. Although this is her first appearance on the Barn stage, she has been affiliated with SCCT for three years, working backstage, recently doing costumes for *Kiss Me Kate*. She admits, however, to having a "run-on" in *The Streets of New York* . . . in a red nightshirt!

Dick Kozak

Larry

Although this is Dick's first actual appearance on the Boal Barn stage, he has appeared in previous SCCT productions, including *Circus in the Wind*, *The King and I*, and the June production of *Kiss Me Kate*. Dick has also worked at the University Festival Theatre, in *The Physicists*, and *Blood Wedding*, in 1966. Dick, who will be a sophomore in high school, has a flair for make-up, and has collected his own kit.

SAVE MONEY!



### DISCOUNT COUPON

Bring this coupon to either store for a 20% discount on purchase of 3 rolls of film, any size, any type.

Centre County Film Lab

Centre County Film Lab

321 W. BEAVER AVE.  
and  
104 SOWERS STREET



CHEMCUT  
Corporation

Designers and manufacturers of  
specialized chemical etching equipment  
for the electronics and metalworking industries

Science Park • State College

C  
O  
R  
N  
E  
RESTAURANT

• Serving fine food  
since 1926

M. C. Mateer, Manager



## SMORGASBORD

CATERING: • Banquets • Parties • Wedding Receptions • Luncheons

### PENN BELLE HOTEL

BELLEFONTE, PA.

Gino & Beth Fornicola

Compliments of

### BALFURD'S • Careful Cleaners & Launderers

• 307 W. BEAVER AVE.

• 111 S. GARNER STREET

### REED, LEAR AND CO. — Investment Securities

(MEMBERS NEW YORK STOCK EXCHANGE)

153 S. Allen Street, State College

HERVEY D. HOTCHKISS  
238 - 2653

E. KEITH ANDERSON  
355 - 3567

### THE FIRST NATIONAL BANK OF STATE COLLEGE

122 W. College Avenue

Visit Our Branches

1248 S. ATHERTON STREET

— Ample Parking

1826 N. ATHERTON STREET

Compliments of

### NEIDIGH BROS. LIMESTONE, Inc.

"for all your limestone needs"

• 466 - 6216

Compliments of

### DEAN'S FRUIT MARKET

• 1518 NORTH ATHERTON STREET

*We never Hamper Good Taste with High Costs*

LIGHTING FIXTURES • LAMPS • SHADES • KITCHEN CABINETS • WIRING SUPPLIES

1524 NORTH  
ATHERTON ST.



STATE  
COLLEGE

VISIT OUR LARGEST, MOST MODERN SHOWROOM

### STUDENT BOOK STORE

330 E. COLLEGE AVENUE



## THE PRODUCTION STAFF FOR CHEAPER BY THE DOZEN

### *Producer*

Caroline Waters

### *Technical Director*

Robert Sams

### *Stage Manager*

Betti Henry

### *Assistant Stage Manager*

Dick Porter

### *Properties and Stage Set*

Jeannette Lynch

Vicky Dale

### *Make Up*

Beverly Mamett

### *Costumes*

LuAnne Russell

Sallie Bissey

Bonnie Wentz

Sherri Munson

### *House Manager*

Bill Dunkle

### *Program Notes*

Susan Knerr

### *Program Layout*

Betti Henry

Bill Klaban

Joan Reddick

### *Program and Publicity Photos*

Don Johnson

*Barn Boal Apprentices* — Carol Beik, Maureen Smith, Bill Henning, Howard Henning, Diane Klaus, Kay Radolec, Carly Searles, Kathy Porter, Gayle Starkey, Dallas Kingsbury, Jeff Bliesmer, Terry McDonough, Steve Reddick, Eric Haas.

## ACKNOWLEDGMENTS

Mrs. Paul H. Margolf

Mrs. T. I. Mairs

Miss Julia Gregg Brill

Mrs. D. T. Pearce

Furniture Exchange, Inc.

G. C. Murphy Company

Penn-Whelan Drug Co.

WRSC's Dale Paul for

Green Room broadcast

## *Have you heard?*

## **Heirs Unlimited Diaper Service**

**"Caters to VERY YOUNG Ladies and Gentlemen"**

- **Pick-up and Delivery Twice Weekly**
- **Supplying Laboratory-Approved Diapers**
- **Temporary Diaper Service for the Visiting Family and Friends**

**Member — Diaper Service Industry Association  
(DSIA)**

**Locally Owned and Operated**

**Phone 238 - 6964**

# The State College Community Theatre

## honors

Although Lillian Major didn't come to America to stay until 1953, her first appearance on the American scene was in 1947, when she came to the States as a model for top British designer Hardy Ames. That position was scarcely less interesting than the role she played in King George VI's Coronation Show, when she was one of "Sir Charles Cochrane's young ladies" in the show, which starred Beatrice Lillie and included Sarah Churchill as a member of the cast.

Later, when Lillian came to the U. S. in 1953 to visit friends, she was asked by the late Pierre Boal to be curator of the Boal Museum. She accepted and has held the position for the past 14 years.

However, it was in 1958 that she first envisioned the possibility of a summer theatre at the Boal Barn. An interview with Mary Rogers, and an article in the Centre Daily Times, served to arouse the interest of local community theatre patrons, and started a fund drive under the auspices of the Centre County Theatre Association. Shortly thereafter, the State College Community Theatre acquired the lease to the Boal Barn, which has served as the Community Theatre's summer home ever since.

The next step was a special fund raising performance, planned by Sidney Bowhill and several board members, of Shaw's *The Dark Lady of the Sonnets* . . . which, appropriately enough, had lines urging the establishment of a new theatre. In Shaw's play, Lillian herself played the role of Queen Elizabeth.

Lillian, who is the wife of John C. Major, a retired University Professor of English, has always encouraged a liaison between the Boal Museum, and the Community Theatre at the Boal Barn. She has also been instrumental in arranging many theatre parties.

Although her job as curator of the museum takes a great deal of her time, Lillian has appeared on the Boal Barn stage several times, playing the lead in *The Pleasure of His Company* in 1962. In 1963 she appeared in *Gigi*, and in 1965, was featured in *Ladies in Retirement*.

Lillian has also performed other tasks for the Community Theatre, during her long association with the group, planning and operating the Senior High School Tournament in 1964, along with Bill Dunkle; serving as a member of the SCCT Board for two and one-half years, and as publicity manager for *Where's Charlie?*

Presently, Lillian serves as librarian and archivist for the Community Theatre, a position she has held since 1964. Her contributions and foresight throughout the history of the Boal Barn and Community Theatre are recognized and appreciated by all those associated with her and with this theatre.



Lillian Major



## THE STATE COLLEGE COMMUNITY THEATRE — WHAT IS IT?

The State College Community Theatre, Inc., was established in 1954 as a non-profit, educational, charitable organization whose purpose is the promotion of creative endeavor and expression in the allied arts of the theatre.

From 1954 to 1959, the SCCT presented its shows only in local school auditoriums. Then, in 1959, it inaugurated its first summer season with the presentation of two plays at the Boal Barn. Since then, the importance of the summer season has continued to grow, especially in the area of the apprentice program. This year, approximately 20 local teen-agers have volunteered to serve as apprentices at the Barn, and are performing most of the backstage tasks.

The SCCT winter season consists of the annual children's play and the spring musical. The 1967 presentations were "Hansel and Gretel" and "Kiss Me Kate."

Membership in the SCCT is open to anyone interested in the theatre arts, either as an on-stage or backstage participant, or as a member of the audience.

### OFFICERS OF THE STATE COLLEGE COMMUNITY THEATRE

President .....	C. E. (Nick) CARTER
Vice-President .....	GIL ABERG
Secretary .....	CYNTHIA CAMPBELL
Treasurer .....	KAY GAMBLE

### BOARD MEMBERS

WILLIAM MILLER	WARREN BURNS
LILLIS BERRY	ADELE HAUGH
COLENE JOHNSON	ADRIAN LANSER

MIMI BOAL LEE



Reservations accepted

Monday thru Saturday  
2 p.m. to 5 p.m.  
and 7 p.m. to 10 p.m.

238 - 4037

### 1967 SUMMER SEASON

#### MARY, MARY

by Jean Kerr ..... JUNE 14-17, 21-24

#### CATCH ME IF YOU CAN

by Weinstock and Gilbert ..... JUNE 28-JULY 1, 5-8

#### CHEAPER BY THE DOZEN

by Christopher Sergel ..... JULY 12-15, 19-22

#### THE DESPERATE HOURS

by Joseph Hayes ..... JULY 26-29, AUG. 2-5

#### CALAMITY JANE

by Fain and Webster ..... AUG. 9-12, 16-19, 23-26

## PENN STATE MOBILE HOMES

• SALES "Instant Living" • SERVICE

STATE COLLEGE, PA.

Phone: 237 - 7780



**wmaj**

**am - fm**

**serving you  
24 hours  
day and night**

**1450**

**103.1**

*For a Complete Evening . . .*

**BEFORE AND AFTER**

**THE THEATRE**

## **The Tavern Restaurant**

**220 E. COLLEGE AVENUE**

***Best Wishes to State College Community Theatre  
for a Successful Season from***

## **THE MILLBROOK PLAYHOUSE, INC.**

**MILL HALL, PA.**

**Routes 220 & 64**

June 27 - July 2	SEE HOW THEY RUN — by Allyn and Greene
July 4 - July 9	THE BOY FRIEND — by Sandy Wilson
July 11 - 16	KIND LADY — by Edward Chodorov
July 18 - 23	TAKE HER SHE'S MINE — by Phoebe & Henry Ephron
July 25 - 30	DARK OF THE MOON — by Richardson & Berney
Aug. 1 - 6	NEVER TOO LATE — by Sumner Arthur Long
Aug. 8 - 13	PHILADELPHIA STORY — by Philip Barry
Aug. 15 - 20	THE GLASS MENAGERIE — by Tennessee Williams
Aug. 22 to Sept. 4	SOUTH PACIFIC — by Rodgers & Hammerstein, II

**Call 717 - 748 - 8083 for Reservations**

**Tickets on Sale at HORNER'S BOOK SHOP — 202 S. Allen St., State College**